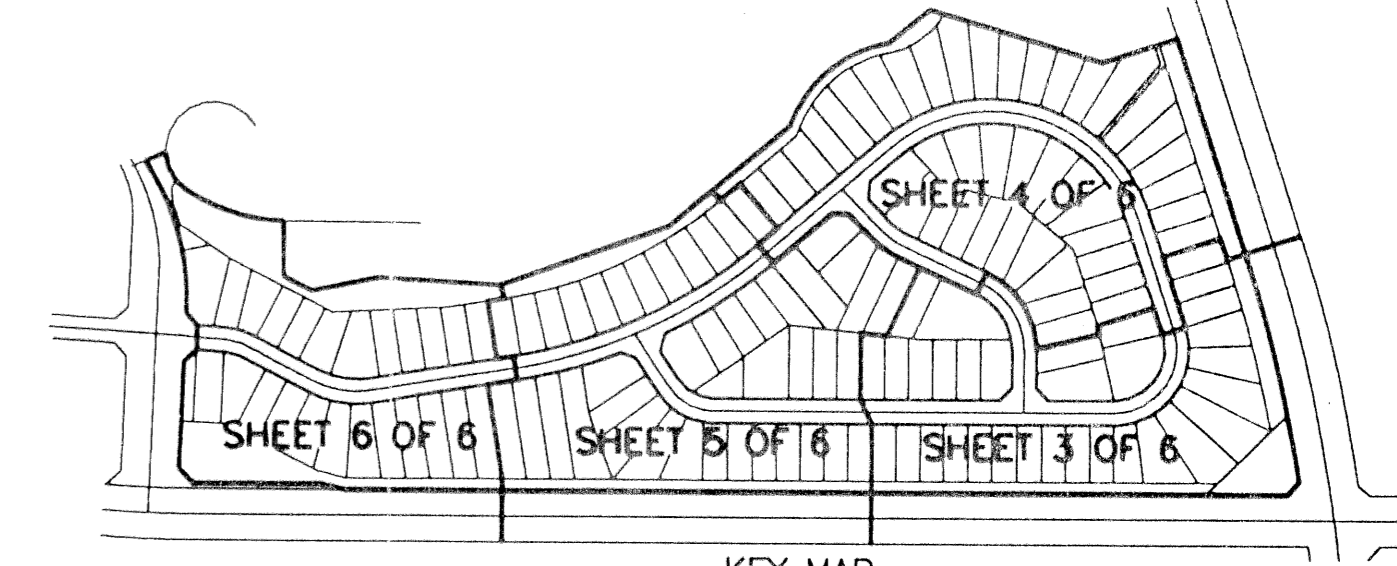


ABERDEEN - PLAT NO. 26

A PORTION OF A PLANNED UNIT DEVELOPMENT
 LYING IN SECTIONS 15 AND 16, TOWNSHIP 45 SOUTH, RANGE 42 EAST
 BEING A REPLAT OF A PORTION OF ABERDEEN - PLAT NO. 2 AS RECORDED IN PLAT
 BOOK 55, PAGES 11 THRU 22, PUBLIC RECORDS OF PALM BEACH COUNTY, FLORIDA
 SHEET 6 OF 6

0270-030

7



STATE OF FLORIDA
 COUNTY OF PALM BEACH
 This Plat was filed for record at _____
 M. This day of _____, 19____,
 and duly recorded in Plat Book No. _____
 on Page _____
 Dorothy H. Wilken, Clerk of the Circuit Court
 By _____ D.C.

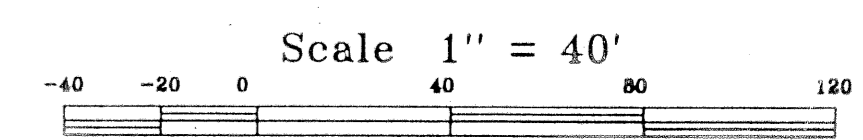
GOLF COURSE
 TRACT "H"
 ABERDEEN - PLAT NO. 2
 (PLAT BOOK 55, PAGES 11-22)

LAKE
 WATER MANAGEMENT-TRACT "L-10"
 ABERDEEN - PLAT NO. 2
 (PLAT BOOK 55, PAGES 11-22)

WATER MANAGEMENT TRACT "W-1"
 (TO BE MAINTAINED BY ABERDEEN
 PROPERTY OWNERS ASSOC., INC.)

PET. 80-153

COORDINATE NOTE:
 STATE PLANE COORDINATES SHOWN ARE GRID DATUM, NAD 83 1990
 ADJUSTMENT, FLORIDA EAST ZONE, COORDINATE SYSTEM 1983 STATE
 PLANE TRANSVERSE MERCATOR PROJECTION.
 LINEAR UNIT = US SURVEY FEET
 ALL DISTANCES ARE GROUND
 SCALE FACTOR = 1.0000293
 GROUND DISTANCE X SCALE FACTOR = GRID DISTANCE
 N 88°36'17"W (PLAT BEARING) -01°45'15" COUNTER CLOCKWISE
 S 89°38'28"W (GRID BEARING) BEARING ROTATION (PLAT TO GRID)
 THE SOUTH LINE OF SECTION 15, TOWNSHIP 45 SOUTH, RANGE 42 EAST



79/7

ABERDEEN PLAT NO. 26
 PAGE 7
 SUBDIVISION: ABERDEEN PLAT NO. 26
 DATE: 03-15-03
 DRAWN BY: [Signature]
 CHECKED BY: [Signature]

ABERDEEN - PLAT NO. 2
 (PLAT BOOK 55, PAGES 11-22)

ABERDEEN - PLAT NO. 25
 (PLAT BOOK 78, PAGES 96-101)

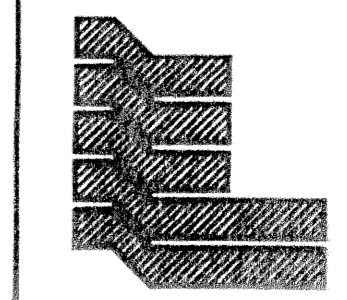
SOUTHPORT DRIVE
 (PLAT BOOK , PAGES)

FAIRWAY LAKES DRIVE (TRACT "B")
 (PLAT BOOK 78, PAGES 96-101)

GATEWAY BOULEVARD (NW 22ND. AVENUE)
 (O.R.B. 3502, PAGES 1527 & 1528)

UTILITY SITE, LE CHALET PLAT NO. 1
 (PLAT BOOK 31, PAGES 166 & 167)

0270-030



Landmark Surveying & Mapping Inc.
 1850 FOREST HILL BOULEVARD
 PH. (407)433-5405 SUITE 100 W.P.B. FLORIDA

ABERDEEN - PLAT NO. 26